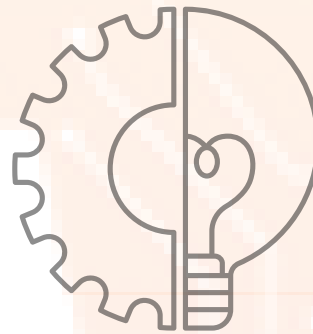


**#1**

**WORLD CLASS REAL ESTATE SOFTWARE WITH 40 ASSET CLASSES**



**REAL ESTATE SOFTWARE SOLUTIONS USING PROPRIETARY TECHNOLOGY, ARTIFICIAL INTELLIGENCE, AND DATA ANALYTICS.**



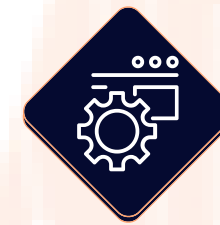
**Risk Factors**

- Population Change
- Employment Change
- Shopping Patterns
- Flood zones
- Shopping trend in local market



**Investor Benefits**

- Private Placement
- Proprietary Technology
- Share Holder
- Risk Management
- Software Automation
- Portfolio Customization
- Tax Incentives
- Asset Protection



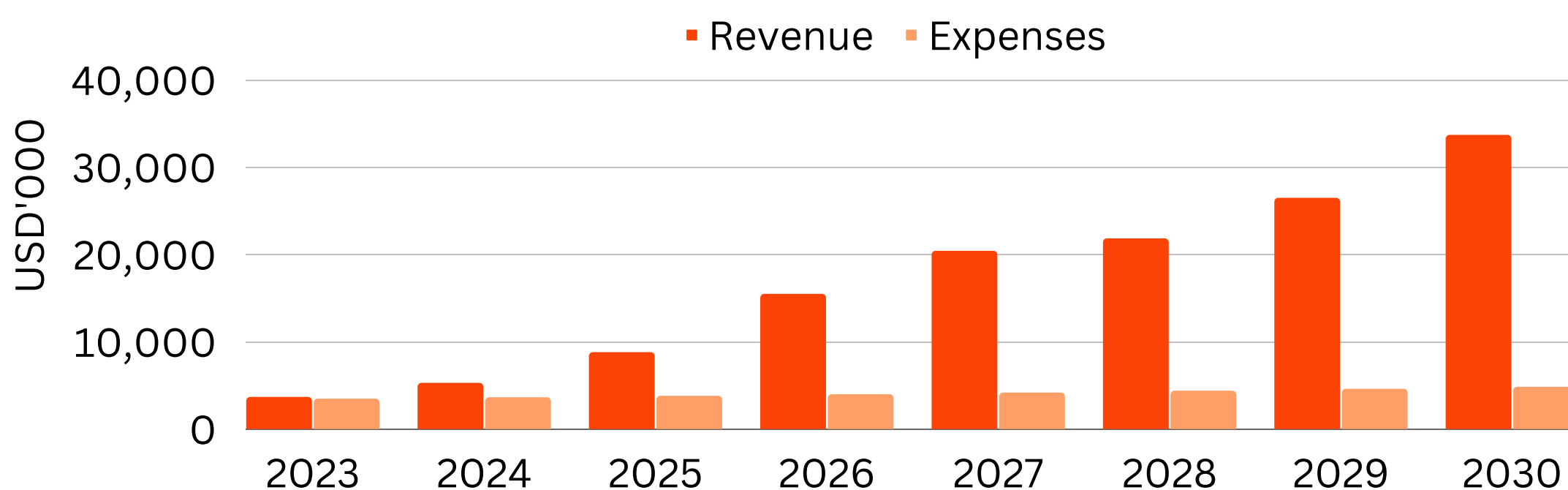
**Software Performance**

- IDX Data and SEO
- Data Licensing New Market Trend
- API Technology
- Identified Net Profit
- AI and Data Analytics
- National Brand
- Outperform Competitors
- Global Brand

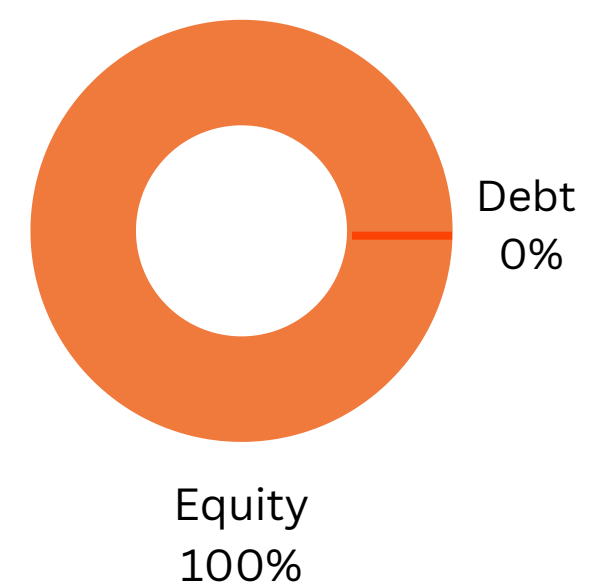
[www.visiontechsoftware.com](http://www.visiontechsoftware.com)  
[visiontechsoftware@yahoo.com](mailto:visiontechsoftware@yahoo.com)  
 (866) 708-4746

315 Madison Avenue, 3rd Floor, New York, NY 10017  
 9229 Queens Boulecard, Suite CU4, Rego Park, NY 11374

**Income & Expense Projections over 8 Years**



**Financing Mix**



**Fundraising Needed: \$15,650,000**